

Beatbox 100

Portable speaker

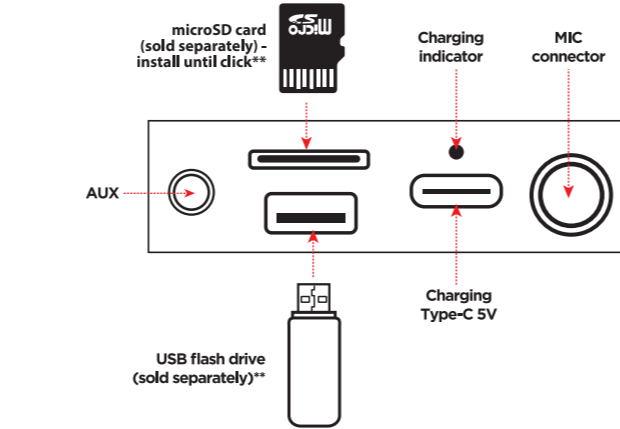
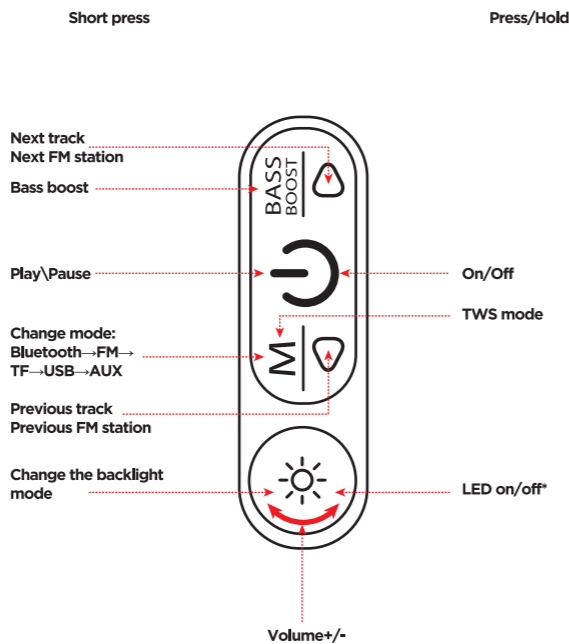
Operation manual



IP20 EAC RoHS

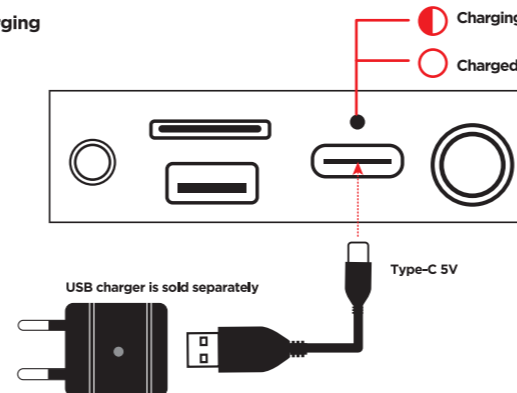


1. Functions

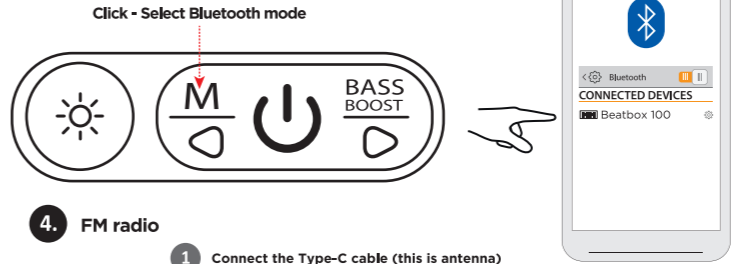


*To improve the quality of radio receiving, turn off the backlight
 **USB flash drive and TF drive must be up to 64GB in size and formatted in FAT32 system

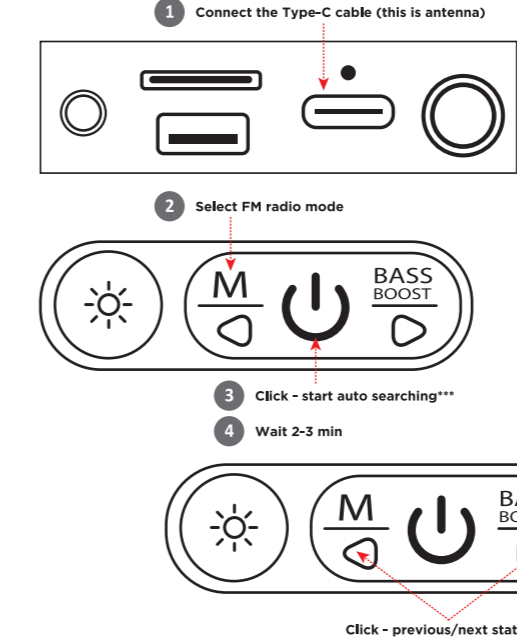
2. Charging



3. Bluetooth connection



4. FM radio



***To increase the number of radio stations found by auto-search, turn off the backlight

5. Stereo system of two Beatbox 100 (TWS mode)

